

Using a Reversing Ring.

When a lens is used beyond its specified close-up distance, image quality may be deteriorated. By using a reversing ring, the deterioration can be minimised. A reversing ring is an accessory to mount the lens in reverse to magnify objects.

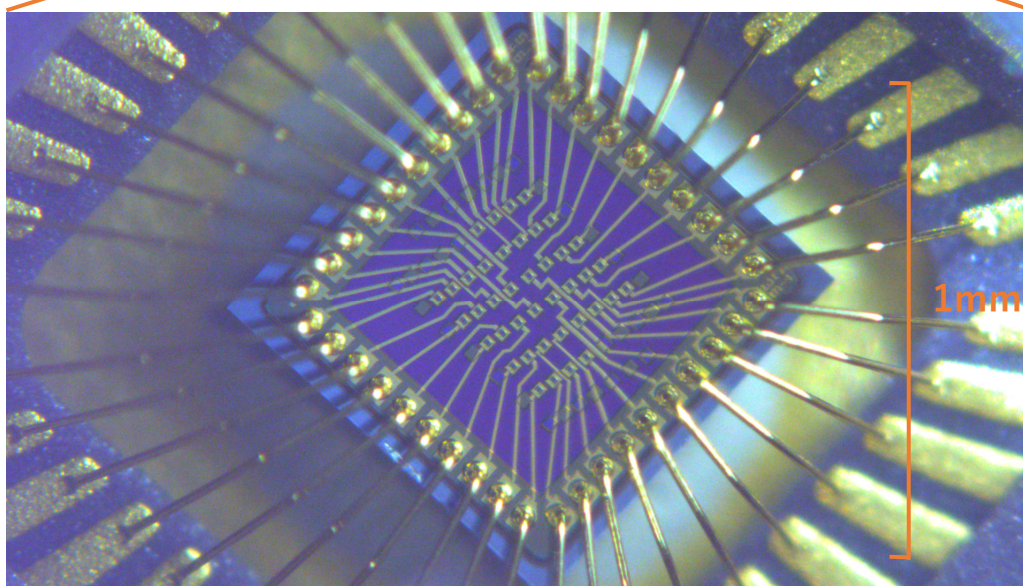
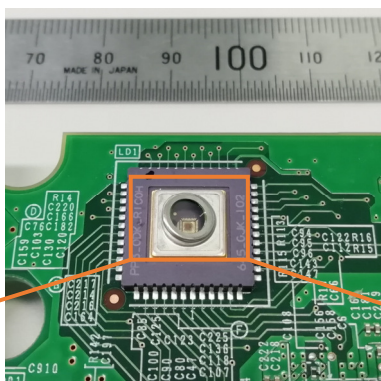
Macro lenses are popular, but the combination of a C-Mount lens and a reversing ring may be a cost-saving solution for close-up applications with magnification of 1X or higher.

Please note: The reversing ring is for lenses with 27mm filter threads only.

Object : VCSEL
Lens : FL-CC1614A-2M
Reverse ring : FP-RR27



x2.3



By using together with macro focusing rings, magnifications of up to 7x are possible. Refer to the specification sheet for details.