

lenses

NO. 04/2008 – SECURITY SYSTEMS DIVISION



WWW.PENTAX.EU



Dear reader,

The New 2008 Price List is finished and incorporates all the very latest products. The launch date for the new price list is May 2008. To enable you to view the new price list in advance, we will be placing it, as usual, in the download area of the Security Systems Division on our homepage at www.pentax.co.uk. It is available in pdf and xls formats.

As we have already announced, the Security Systems Division will in the future offer a greater range of products beside our lenses. We will now present IR illuminators with LED technology made by Raytec and robust all-weather protective housings and pan/tilt heads made by Metham Aviation Design (M.A.D). Both manufacturers have given proof of their manufacturing competence and the product reliability over many years! Furthermore, we will show lenses for board cameras with high resolution for security and machine vision: Be curious!

Best regards, yours

Thomas Feichtner
International Sales & Marketing Manager



VISIT US!

We will present our new products at the following trade fair:



IFSEC2008

12 - 15 May 2008
NEC Birmingham

May 12th to 15th 2008
National Exhibition Centre
Birmingham B40 1NT, UK
www.ifsec.co.uk

Halle 20, booth no. 19084

PENTAX

PENTAX: TRADE FAIR INNOVATIONS

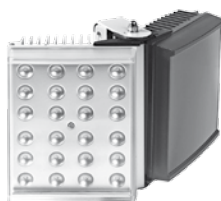


IR SPOTLIGHT WITH LED TECHNOLOGY

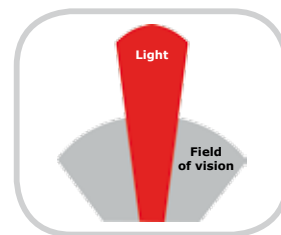
Durable and robust incorporating innovative LED technology. IR LED illuminators made by Raytec are the ideal companion for our high-quality day/night lenses.



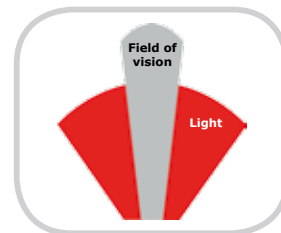
The LED's are built modularly as one, two or three-piece units. For the two or three-piece units, the single modules can be swiveled towards or away from one another, so that the required angle of illumination can be achieved on site.



The standard supplied IR illuminators are 850 nm (950nm optional). Furthermore, the LED illuminators are also available as White Light LED's or as hybrid IR LED illuminators (IR and white light in one unit), for optimum illumination in any possible application.



If the angle of illumination is too narrow, it will result in irradiation or glaring in the centre of the picture. The result: Uneven illumination across the picture.



If the illuminated area is too broad, it will lead to a waste of energy and reduce the intensity of the illumination!



PAN/TILT HEADS AND ALL-WEATHER PROTECTIVE HOUSINGS MADE BY METHAM AVIATION DESIGN (M.A.D).

We are offering the housings in three sizes, so that all our lenses will be easily housed and protected – from the smallest fixed focal length up to the largest 55x zoom.

The appropriate pan/tilt heads up to an extreme load-bearing capacity of 50 kg are also available in our range of products. All housings and pan/tilt heads are available with different common tensions.



LENSES FOR BOARD CAMERAS

At the trade fairs we will also present a series of robust board camera lenses with focal lengths of 6, 8, 12, 16 and 25 mm using the wide-spread M12 mount thread.

All lenses distinguish themselves by high-resolution and a broad transmission range from visible light up to the near infrared wavelengths.



Imprint

PENTAX Europe GmbH
Security Systems Division
Julius-Vosseler-Straße 104
22527 Hamburg

Phone: +49 40 56192-109
Fax: +49 40 56192-334
E-Mail: ssd@pentax.de
Internet: www.pentax.de

FOM 15042008

PENTAX